



UNIVERSITY OF  
LIVERPOOL

INTERNATIONAL COLLEGE





# Welcome

This guide will help you find the perfect accommodation that suits your needs for when you come to study in Liverpool in Autumn 2022.

**Click on the page links below for useful information:**

[Introduction](#)

[Liverpool](#)

[Living in Liverpool](#)

[Getting around](#)

[Accommodation](#)

[Kaplan Living Liverpool](#)

[Room types](#)

[Compare your options](#)

[Kaplan Living Special Support](#)

[Student starter pack](#)

[How to book](#)

[How to pay](#)

[Accommodation guarantee deadline](#)

[Useful information](#)

[Find out more](#)

We're looking forward to welcoming you to the UK soon. Our dedicated accommodation team is here to support you and guide you through the options that best suit your individual needs.



**LIVE  
WITH  
CONFIDENCE**



# Live with confidence

We can't wait for you to join us in the UK at one of our safe and comfortable residences. Our dedicated accommodation team is available to guide you through your options, answer any questions you have, and support you if your situation changes.

## We are here for you

Keeping all our students safe is our top priority. We will continue to have health and safety measures in place that go beyond government guidelines, so you can rest assured that our residences and accommodation partners are taking the necessary precautions to protect your wellbeing.

Our dedicated accommodation team is here to discuss your options with you, or if you need help or support at any time.

## Accommodation guarantee deadline

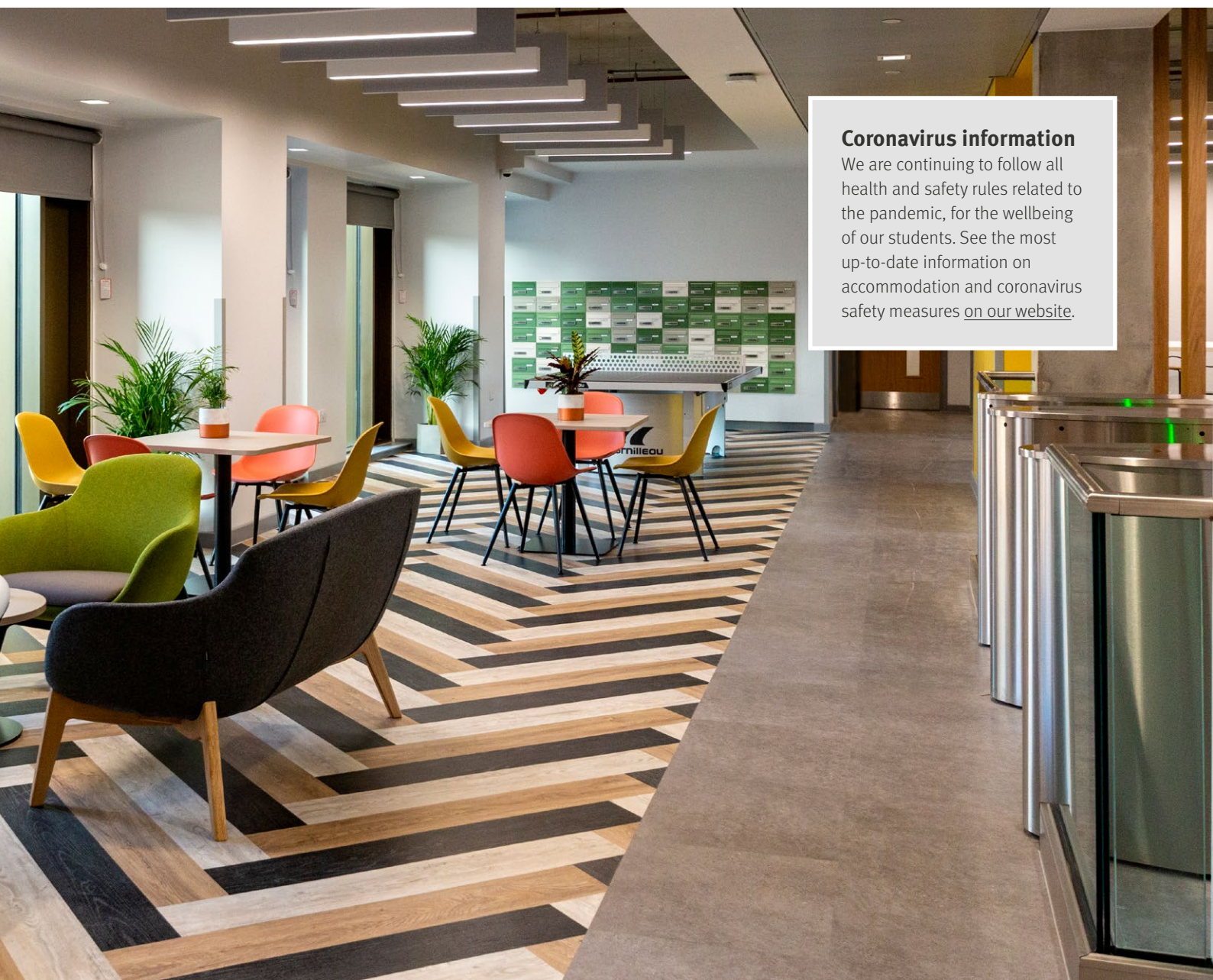
If your course starts in Autumn 2022, you're guaranteed a room with us if you accept your offer to study and book your accommodation by the guarantee date. [See all the guarantee dates here.](#)

Don't worry, if you miss the guarantee deadline we'll still do all we can to find you a fantastic place to stay during your course.

## Your accommodation options

In this guide you'll find detailed information about your accommodation options in Liverpool. Once you accept your offer to study, you can log in to our [accommodation portal](#) and reserve your room.

We operate on a first-come, first-served basis and all options are subject to availability. When you log in to our portal, you will be able to see all currently available options, and can pick your preferred room type.



## Coronavirus information

We are continuing to follow all health and safety rules related to the pandemic, for the wellbeing of our students. See the most up-to-date information on accommodation and coronavirus safety measures [on our website.](#)



# Living in Liverpool

Liverpool has a history that dates back more than 800 years. Home to 2 Premier League football clubs, the city has a global reputation for sport, and is a UNESCO City of Music. With many world-class museums and galleries, Liverpool offers a wealth of attractions for students to explore.

## Experience Liverpool

### Culture

Learn about the history of the city at the Museum of Liverpool, or see one of the UK's largest collections of contemporary art outside London at Tate Liverpool.

### Nature

Explore the historic 235-acre Sefton Park, and visit the Palm House, home to the Liverpool International Plant Collection.

### Shopping

Find all your high street favourites at the Liverpool ONE centre, or discover unique items in the many independent shops that can be found on Liverpool's popular Bold Street.

### Nightlife

Have a great night out in the city with your new friends: visit a traditional English pub, or dance the night away to top DJs playing at Chibuku club night.

### Music

Visit The Beatles Story museum to learn about the legendary pop band, or see some of the world's biggest talents perform at the Echo Arena.

### Food

Enjoy authentic Chinese cuisine in Liverpool's Chinatown, or try traditional British dishes at the Monro pub.

### Sport

Cheer on 2 top UK football clubs, Liverpool and Everton, or try visiting Aintree Racecourse, home to the famous Grand National horse race.

### Outside the city

Take a train ride out of the city to some beautiful beaches. At Crosby beach, see artist Antony Gormley's 'Another Place', an impressive installation of 100 life-size statues facing out to sea.



Royal Albert Dock Liverpool



Friendly student city



Varied choices of restaurants

# Getting around

It's really simple to get around Liverpool, and the Kaplan Living residence is conveniently located within easy reach of the city centre, close to supermarkets, shops and restaurants.

## Transport

### 🚌 Buses

The frequent bus service is a great value and easy way to get around the city. There are 2 main bus stations, at Liverpool One and Queen Square, which serve routes around Liverpool as well as locations outside the city.

### 🚆 Trains

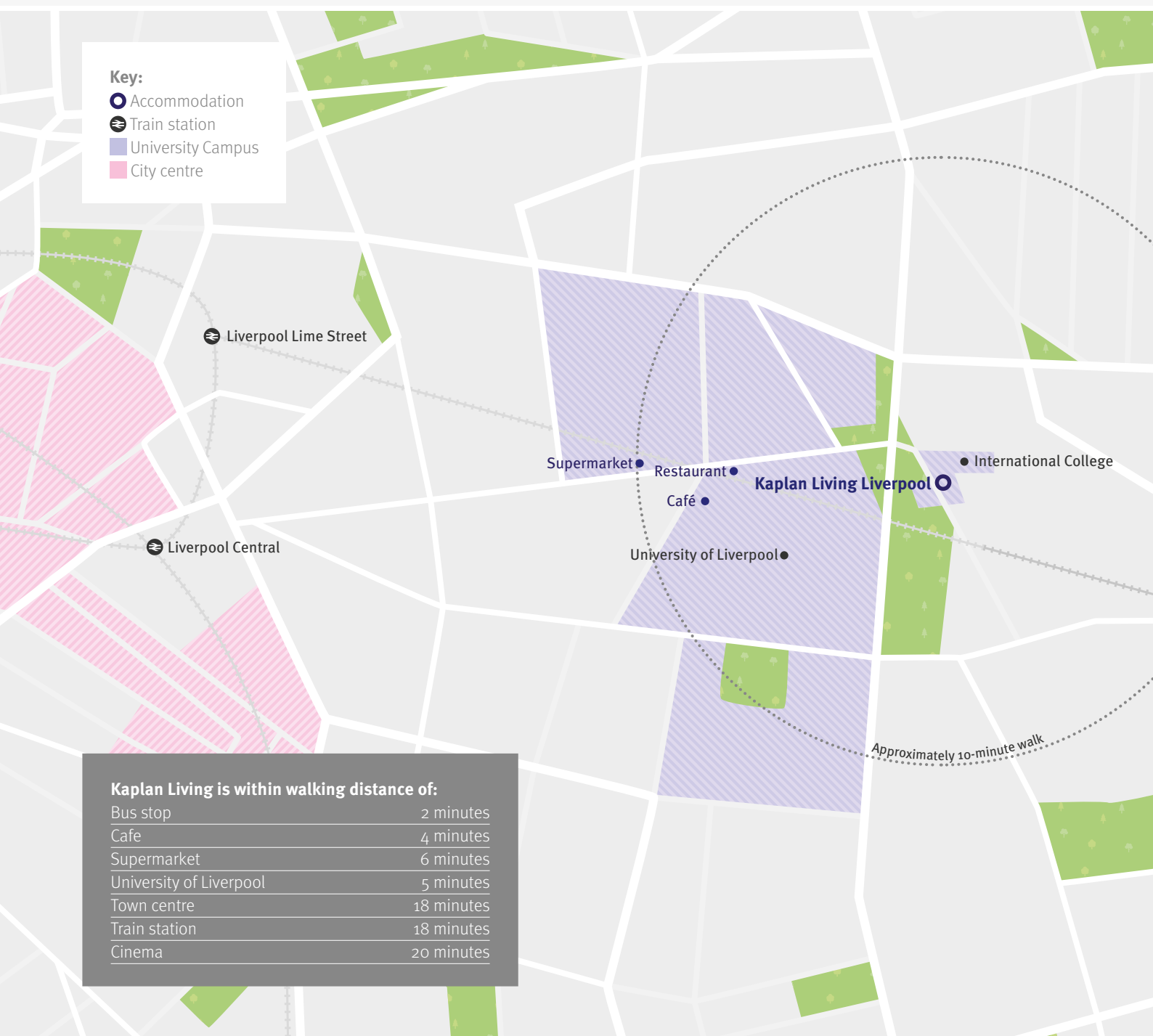
Rail travel in Liverpool is fast and efficient. The city centre has 4 main train stations: Liverpool Central, Lime Street, Moorfields and James Street, serving local and national destinations.

### 🚢 Ferries

A ferry boat service crosses the River Mersey. It is the perfect way to see sights like the Liver Building and Albert Dock.

### 🚖 Taxis

The city also has a reliable taxi service, with taxi ranks located all around the city. They're great for short trips, or for when you have heavy luggage.





# Kaplan Living Liverpool

Our purpose-built accommodation provides an outstanding living and learning environment where students can enjoy a comfortable, safe and friendly home.



## Location

You will be very close to the University campus and a range of local shops, restaurants and supermarkets.



## Journey time to class

The College could not be closer – it is part of the same building, located on the ground floor.



## Private bedrooms

Fantastic modern bedrooms with private shower rooms, study area, and storage space.



## Kitchen

Fully equipped shared or private kitchen, so you can prepare your own meals.



## Social spaces

Students have access to a range of exciting entertainment facilities, such as a games room and TV lounge.



## Facilities

You'll have access to a quiet study room where you can study alone or work on group projects. There is also a bike storage and a laundry room on the ground floor for you to wash your clothes (usage charges apply).



## Internet

Free high-speed WiFi is available throughout the building.



## Bills included

No surprises with electricity, gas and water charges – all bills and maintenance costs are included in the accommodation price.



## Security

On-site management team, round-the-clock security cameras for your safety, and secure door entry systems.



## Cleaning

A weekly cleaning service of communal areas and shared kitchen is included in the accommodation cost.



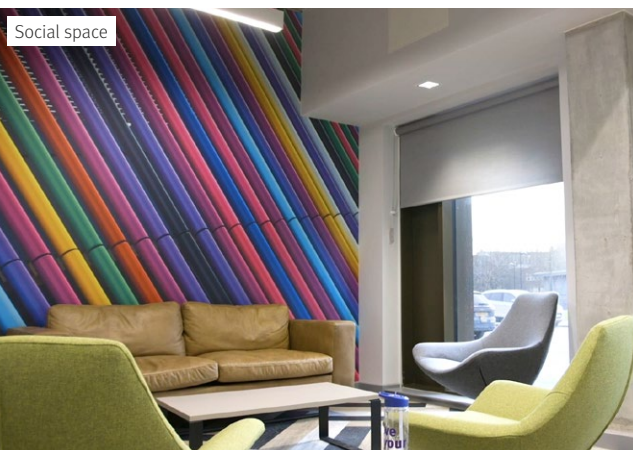
## Kaplan Living Special Support

If you are under the age of 18, or choose to benefit from this service, Wellbeing Coordinators will be available 24/7 to support you.

You can learn more about Kaplan Living Special Support [on this page](#)

Your wellbeing is our top priority. All residences will continue with health and safety guidelines, and additional measures such as enhanced cleaning are in place to protect everyone. [Click here](#) for more information about how we are prioritising your wellbeing.

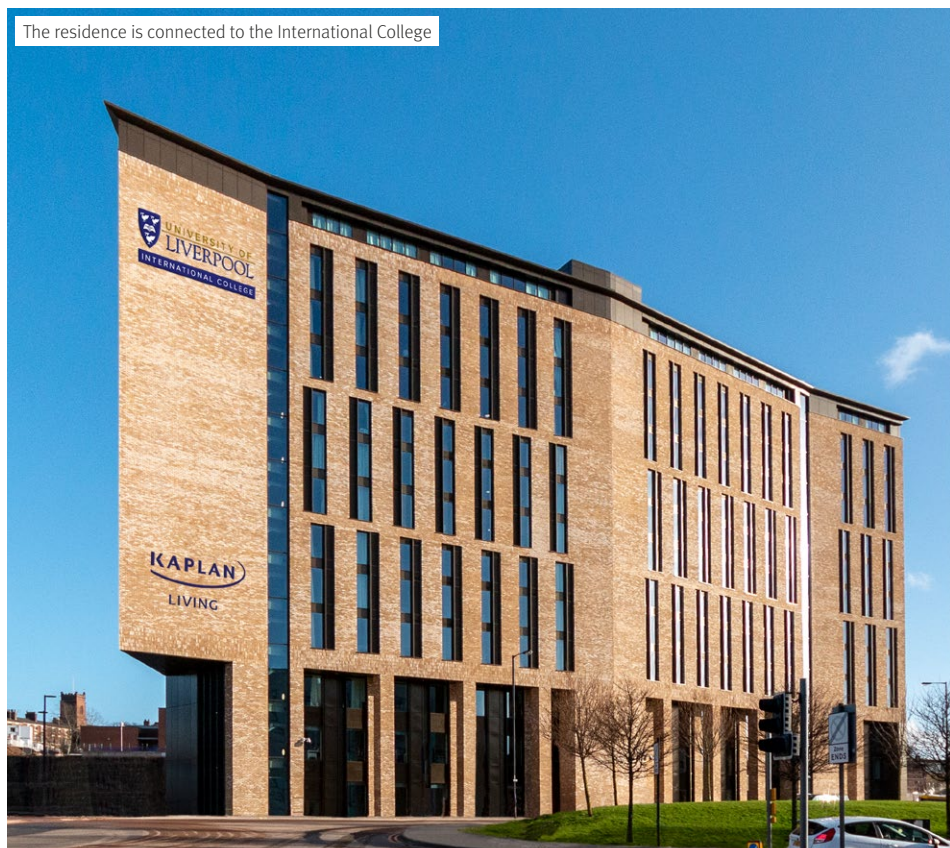
All private bedrooms | Connected to the College | On-site management team | Some rooms have fantastic views of Liverpool



Social space



Studio



The residence is connected to the International College

# Classic

A medium-sized private bedroom in a shared flat of up to 5 students and a fully equipped shared kitchen.

## Features

### Private bedroom



- Small double bed
- Wardrobe, bedside unit and storage space
- Desk, chair, shelving, cupboard and pin board

### Private bathroom



- Shower, toilet and washbasin

### Shared kitchen

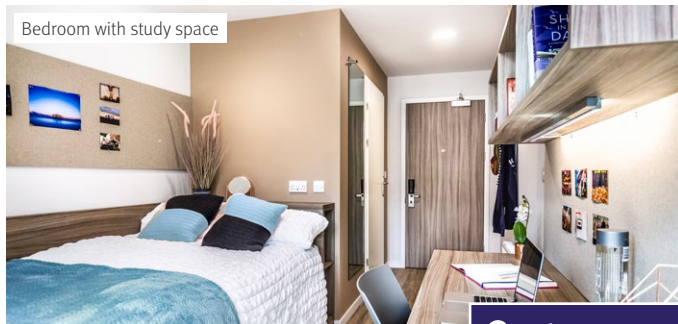
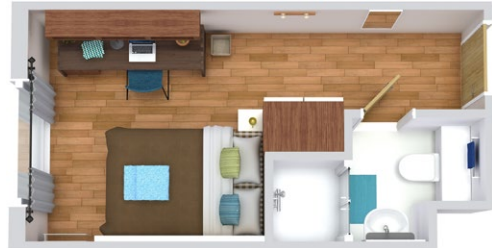


- Oven, hob, fridge-freezer, microwave and cupboard
- Dining area and sofa

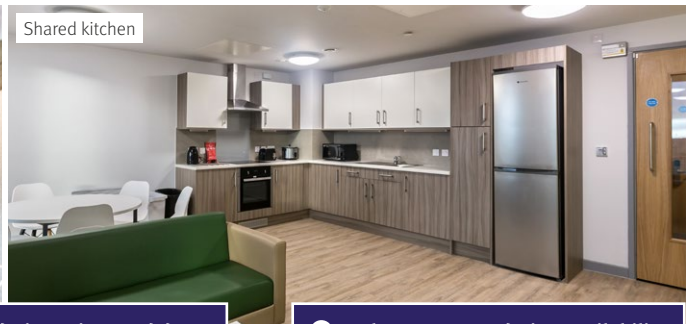
## Floor plan

Approximate room size: 13,5m<sup>2</sup>

Please note: images intended for illustrative purposes only. Actual room layout, contents and furnishings may differ.



Bedroom with study space



Shared kitchen

[Explore accommodation prices and dates](#)

[Explore accommodation availability](#)

# Studio

A large, self-contained private flat with its own modern kitchen facilities and private bathroom.

## Features

### Private bedroom



- Double bed
- Wardrobe, bedside unit and under-bed storage
- Desk, chair, shelving, cupboard and pin board
- Dining table with chair

### Private bathroom



- Shower, toilet and washbasin

### Private kitchen



- Sink, electric hob, small fridge, oven and cupboard

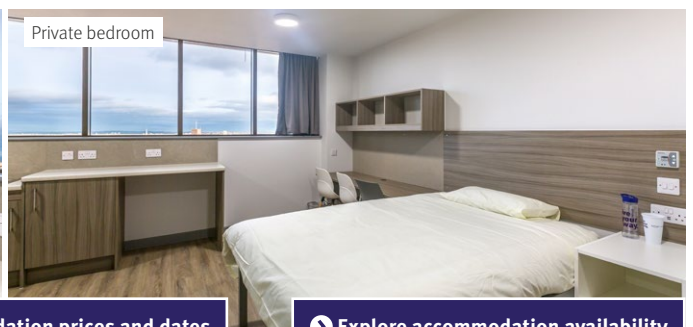
## Floor plan

Approximate room size: 17,5m<sup>2</sup> and 23m<sup>2</sup>

Please note: images intended for illustrative purposes only. Actual room layout, contents and furnishings may differ.



Private kitchen



Private bedroom

[Explore accommodation prices and dates](#)

[Explore accommodation availability](#)




# Compare your options

Use the table below to see which options suit you, and select your preferences when booking your room.




	Kaplan Living Liverpool	
Room type	Classic	Studio
Approximate size	13.5m <sup>2</sup>	17.5m <sup>2</sup> and 23m <sup>2</sup>
Students per flat	up to 5	Private
Bedroom	Private	Private
Study desk, chair, wardrobe, shelves, under-bed storage, notice board and wall heater	✓	✓
Small double bed	✓	
Double bed		✓
Dining table with chair		✓
Bathroom	Private	Private
Shower cubicle, washbasin and toilet	✓	✓
Kitchen	Shared	Private
Fridge, hob, microwave and cupboard	✓	✓
Oven	✓	✓
Lounge seating	✓	
WiFi	✓	✓
Shared area cleaning	Weekly	
Walk time to the College	1 minute	
Available to	All students aged 16 and over	
Kaplan Living Special Support	Mandatory for students under 18 and optional for students aged 18 or over	

## There are lots of benefits when you book accommodation with Kaplan



### For your comfort

-  All private bedrooms
-  Your own study space
-  Free WiFi




### For your convenience

-  Connected to the College
-  On-site cafe
-  On-site laundry

### For your safety

-  On-site support staff
-  Secure door entry
-  Free contents insurance

### For your enjoyment

-  Games rooms
-  TV room
-  Social events

While every effort will be made to allocate your first choice, we cannot guarantee this. We operate on a first-come, first-served basis and all options are subject to availability, therefore you may be offered another accommodation type or location, or we may refer you to another provider.






# Kaplan Living Special Support





Enjoy enhanced support in our Kaplan Living residence.

All residents at Kaplan Living Liverpool will receive comprehensive support throughout their stay. You can also opt to include additional assistance by adding Kaplan Living Special Support to your package; if you're under 18, this service is mandatory for your wellbeing.

Kaplan Living Special Support is a premium service, with an extra level of help for you making the transition to life in the UK. It will give you peace of mind, and help you live with confidence.

For a fee of £300, you'll have 24/7 access to Wellbeing Coordinators, who will be permanently based at the residence. They can help you with things like:

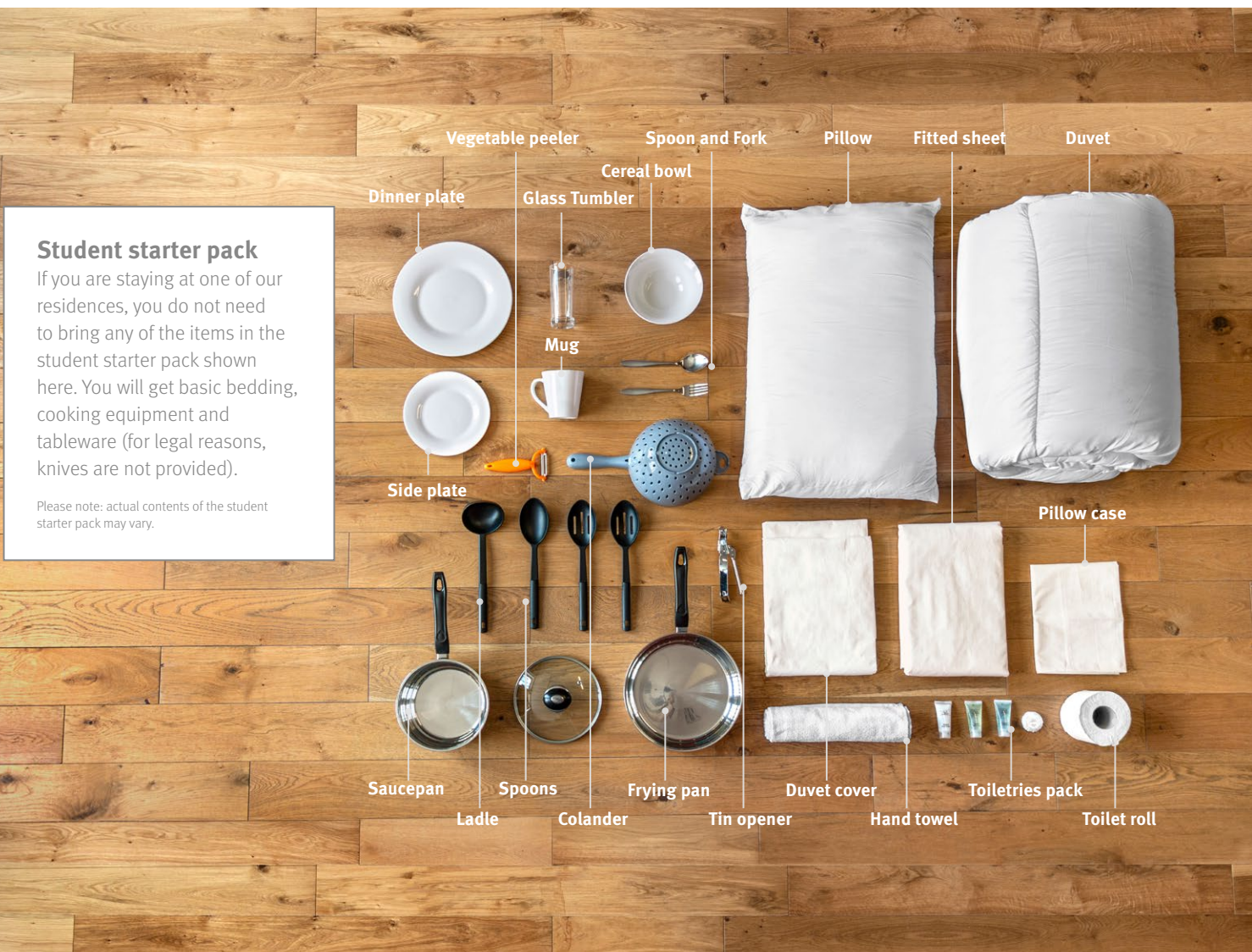
-  Answering questions from you or your parents before you arrive in the UK
-  Helping you get settled into your new home
-  Making medical or dental appointments

-  Handling emergencies such as medical visits
-  Getting involved with the college and residence community
-  Arranging calls with your parents so you can keep in touch
-  Ensuring that you receive the care and support you need

## Student starter pack

### Free items for your arrival

To make your move as easy as possible, we provide all students with a free 'student starter pack' with many of the basic items you'll need as soon as you move in. It means that you won't have to rush around the shops on your first day, and can settle right into your new accommodation.





# How to book

You can book your accommodation by following the steps below.

## Step 1 Choose your room

Check the [dates and prices on the accommodation page](#) on our website, and choose the option that matches your course dates.

## Step 2 Log in to accommodation portal

If you have applied and received an offer of study, you'll need to accept your offer first. If you indicated on the application form you would like Kaplan-arranged accommodation, you'll then receive login details for the [accommodation portal](#) via email. If you have not received anything, please [contact us](#) and we'll arrange to resend it to you.

## Step 3 Confirm your room selection

Use your login details to log into the [accommodation portal](#). Here, you will be able to see available options and you can choose your preferred room type.

## Step 4 Kaplan will allocate your room

Once we have allocated your room, we will send you an email asking you to log back in to the [accommodation portal](#) to confirm your booking. You will need to sign your accommodation agreement electronically, nominate a guarantor and make your first accommodation payment.

## Step 5 Confirmation of booking

Once you have completed the required steps, we will confirm your booking.

## Step 6 Your arrival confirmation

When you are ready to come to the UK and have booked a flight, you will need to confirm your arrival details by completing the online [Pre-Arrival Form](#). The College will be able to book and confirm transfers for you; details are provided in the [Pre-Arrival Guide](#). Please submit your arrival details at least 2 weeks before you fly to ensure the College and your accommodation are prepared for your arrival.



# How to pay

Before you arrive, you can pay your accommodation fees using one of the methods below:

## Method 1

### Bank transfer / credit or debit card to Flywire.

1. Visit [LILiverpool.flywire.com](https://liverpool.flywire.com)
2. Choose your country and the amounts you are paying in Pounds Sterling
3. Choose your payment method and make your payment to Flywire
4. Enter the payer details and those of the student you are paying for
5. Track and confirm your payment by email, SMS or by logging into [LILiverpool.flywire.com](https://liverpool.flywire.com)

## Method 2

### Bank draft or electronic transfer in Pounds Sterling to:

**Bank Account Name:** Kaplan Liverpool Ltd

**Bank Name:** HSBC Bank plc

**Sort Code:** 40-11-60

**Bank Account Number:** 60004286

**BIC:** HBUKGB4B

**IBAN NO:** GB98HBUK40116060004286

**Bank Address:** 60 Queen Victoria Street, London, EC4N 4TR

## Payments

For your first payment, you can pay any amount from a minimum of £1,000 to the full accommodation cost. This is required to secure your booking and should be made at the time of booking before your arrival in the UK. Depending on your accommodation option, the remaining amount is paid when you register for your first term, and before your second term (if applicable).

# Accommodation guarantee deadline

You'll be guaranteed accommodation if you accept your offer to study and book your accommodation before the dates below.

## Autumn 2022

Your accommodation contract start month	Guarantee date to book accommodation
September 2022	1 August 2022
October 2022	1 September 2022

Don't worry – if you miss the guarantee deadline, you can still login to the accommodation portal to see what options are available to you. If no options are available at the time, you can join our waitlist, and we'll do everything we can to help you find a great place to live in Liverpool.





# Useful information

You can find some helpful information below to guide you through your accommodation application.

## Accommodation Agreement

The Accommodation Agreement is a contract confirming the details of your accommodation. By signing your Accommodation Agreement, you are agreeing, under UK law, to pay for your accommodation for the full length of the accommodation contract.

## Accommodation confirmation

You must complete the required steps in order to secure your booking. If you fail to do so by the accommodation confirmation date, your agreement may be cancelled and your room given to another student to book. If your Accommodation Agreement is cancelled, and you tell us that you would still like to book Kaplan-arranged accommodation, you will be offered the next available room.

## Accommodation length change

You may not change your contract length after you have booked and signed your Accommodation Agreement.

## Accommodation portal login

You'll receive your login details via email once you have accepted your study offer.

## First payment

The first payment is to secure your accommodation along with the signed Accommodation Agreement.

## Guarantors

A guarantor is someone who will be legally responsible for any accommodation fees you are unable to or fail to pay.

## Kaplan Living Special Support

On top of our comprehensive residence core support, we also offer the Kaplan Living Special Support package upgrade. With this service, Wellbeing Coordinators will be on hand to help you settle into life in the UK, assist with any problems you encounter, and ensure that you can live and study with us safely. This 24/7 support is available to all students for an additional fee of £300 — just tick the box when making your booking via the accommodation portal to confirm you'd like to sign up to the service. This is an optional extra service for students over the age of 18; for those under 18, it is mandatory for their wellbeing.

## Moving into your room

You will be able to move into your room from the start date of your contract, as long as you have sent us your signed Accommodation Agreement and first payment.

## Refunds

When your Accommodation Agreement is cancelled and you decide not to take another offered room, refund of any fees paid will only be granted in line with Kaplan International Pathways' Terms and Conditions, and may be subject to an administration fee being deducted. If you leave the College for any reason after you arrive, accommodation fees will not be refunded.

## Under 18s

The College will accommodate students under 18 years of age in a single-sex flat with other students under 18 years old. Students who are under the age of 18 on arrival in the UK may be asked to pay all their accommodation fees before they arrive, and are advised to stay in either Kaplan or university-arranged accommodation.

## Visa

If your visa application is unsuccessful, please send a copy of your visa refusal documents (or other evidence) to your Admissions Adviser for review. A decision will then be made regarding eligibility for refund in line with the company's terms and conditions.



### Find out more

Visit the links below or contact us for more information.  
We look forward to welcoming you to Liverpool!

#### Useful links:

- 🔗 [Accommodation in Liverpool](#)
- 🔗 [Prepare for your studies at the College](#)
- 🔗 [University of Liverpool](#)
- 🔗 [Student life in Liverpool](#)
- 🔗 [Visit Liverpool](#)

#### Social media:

Search: LICLiverpool



#KaplanLife

#### Contact details:

✉ Kaplan Living Liverpool  
1 Paddington Village  
Liverpool, L7 3FA

@ [pathways.accommodation@kaplan.com](mailto:pathways.accommodation@kaplan.com)

#### For accommodation queries with the Central Accommodation Team:

☎ +44 (0)20 7045 5060

#### For arrival queries with the College:

☎ +44 (0)15 1318 4300